



WWW.BAUMPNEUMATICS.CA

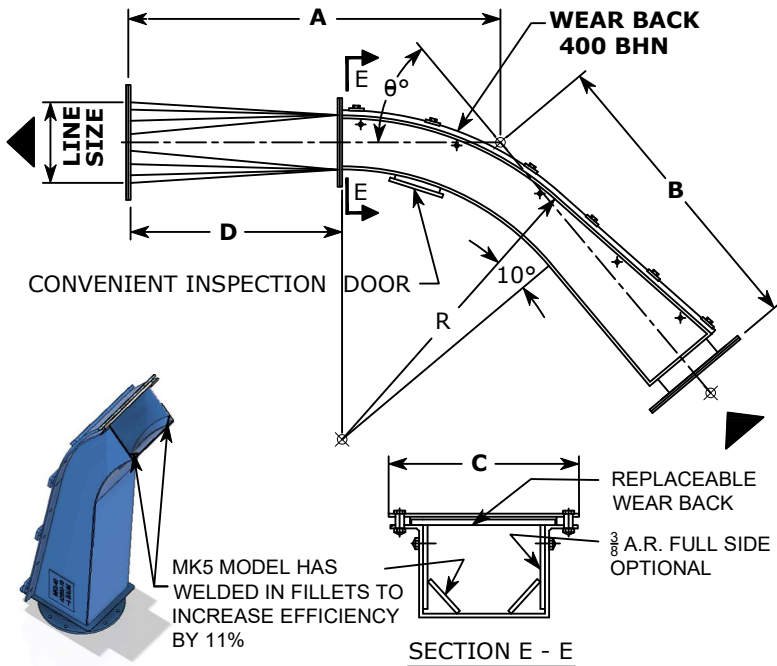
# Specifications

A-2100

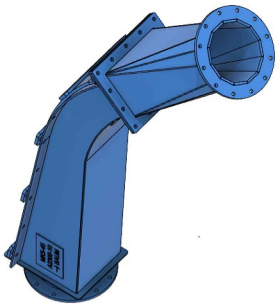
Rev. 01

## Wear Back Elbow ( MK III & V ) Forest Industry Standard Dimensions

12 / 22



MK5 MODEL HAS WELDED IN FILLETS TO INCREASE EFFICIENCY BY 11%



- SAVE TIME ON DWGS [DOWNLOAD 2D FULL SCALE DRAWINGS 6"-20"](#)
- INSTALLER TO SPACE ELBOWS 15X PIPEØ APART TO PROVIDE ACCELERATION BETWEEN ELBOWS
- WEAR BACK ELBOW REDUCES LINE VELOCITY BY 40%
- FOR ELBOWS LESS THAN 15° USE MITERS, [A2030](#)
- 45° AND 90° ARE THE MOST COMMON ANGLES

LINE SIZE	ANGLE	A	B	C	D	R	WT.
8 5/8	10°	40 7/8	9 3/16	13 1/4	21	34 1/2	238
	15°	36 11/16	21 7/8	13 1/4	21	34 1/2	251
	30°	35 5/16	27 1/8	13 1/4	21	34 1/2	288
	45°	38 1/16	33 7/8	13 1/4	21	34 1/2	325
	60°	42 3/8	40 3/16	13 1/4	21	34 1/2	362
	90°	55	55	13 1/4	21	34 1/2	436
10 3/4	10°	46 9/16	16 1/4	16 3/8	26	43	337
	15°	42 11/16	23 5/8	16 3/8	26	43	352
	30°	42 1/2	35	16 3/8	26	43	396
	45°	46 1/2	42 15/16	16 3/8	26	43	440
	60°	52 3/16	50 5/8	16 3/8	26	43	484
	90°	68 3/8	69	16 3/8	26	43	571
12 3/4	10°	56 13/16	18 1/16	18 3/8	32	51	430
	15°	52 1/16	27 1/16	18 3/8	32	51	452
	30°	51 11/16	40 5/8	18 3/8	32	51	517
	45°	56 3/8	50 1/16	18 3/8	32	51	582
	60°	63 1/16	59 1/4	18 3/8	32	51	646
	90°	82 1/4	81	18 3/8	32	51	775
14	10°	61 15/16	20 1/8	20	35	56	429
	15°	56 13/16	29 15/16	20	35	56	473
	30°	56 1/2	44 3/4	20	35	56	604
	45°	61 11/16	55 1/16	20	35	56	735
	60°	68 1/2	65 1/16	20	35	56	865
	90°	90 1/8	89	20	35	56	1126
16	10°	71 7/8	21 5/16	22 1/8	40	64	612
	15°	65 11/16	32 15/16	22 1/8	40	64	670
	30°	64 15/16	50 3/16	22 1/8	40	64	840
	45°	70 3/4	82 1/8	22 1/8	40	64	1011
	60°	79 1/16	73 5/8	22 1/8	40	64	1182
	90°	103	101	22 1/8	40	64	1523
18	10°	79 3/4	25 3/8	23 3/4	45	72	908
	15°	73 1/8	38	23 3/4	45	72	952
	30°	72 3/4	57 1/16	23 3/4	45	72	1081
	45°	79 3/8	70 3/8	23 3/4	45	72	1210
	60°	88 13/16	83 1/4	23 3/4	45	72	1339
	90°	115 7/8	114	23 3/4	45	72	1597
20	10°	88 9/16	28 3/8	26 3/8	51	80	1097
	15°	81 9/16	42 1/8	26 3/8	51	80	1151
	30°	81 1/2	62 15/16	26 3/8	51	80	1313
	45°	77 5/8	89 1/16	26 3/8	51	80	1475
	60°	91 7/8	99 5/8	26 3/8	51	80	1637
	90°	126	129 13/16	26 3/8	51	80	1961

LINE SIZE	ANGLE	A	B	C	D	R	WT.
4 1/2	10°	24	4 1/2	9 1/8	11	18	100
	15°	20 15/16	9 1/8	9 1/8	11	18	110
	30°	19 5/8	15 1/4	9 1/8	11	18	125
	45°	20 1/2	19	9 1/8	11	18	135
	60°	22 1/2	22 7/16	9 1/8	11	18	145
	90°	17 3/4	30 1/4	9 1/8	11	18	160
6 5/8	10°	32 9/16	5 1/2	11 1/4	16	26 1/2	152
	15°	30 3/16	12 1/8	11 1/4	16	26 1/2	161
	30°	28	21	11 1/4	16	26 1/2	188
	45°	29 11/16	26 1/2	11 1/4	16	26 1/2	214
	60°	31 13/16	31 1/2	11 1/4	16	26 1/2	241
	90°	42 1/8	43	11 1/4	16	26 1/2	294

NOTE: DIMENSIONS IN INCHES, WEIGHT IN LBS, VARYING SLIGHTLY WITH PRODUCTION MODELS. REQUEST CERTIFIED DRAWINGS OF PARTICULAR MODELS OR APPLICATIONS FOR EXACT DIMENSIONS.