



WWW.BAUMPNEUMATICS.CA

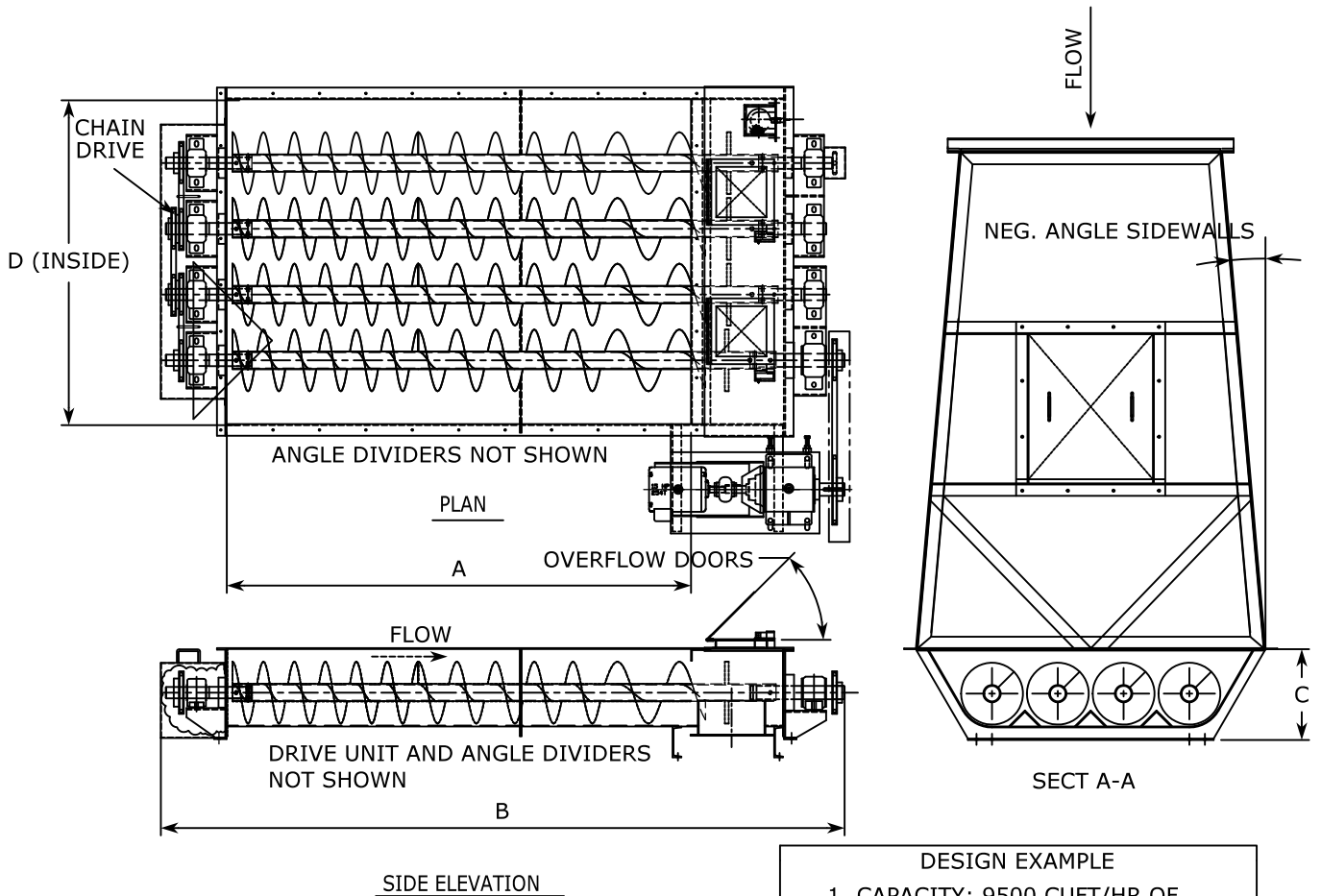
Specifications

Model - 16 Live Bottom Surge Bin

A-5030

Rev. 2

11 / 17



DESIGN EXAMPLE

1. CAPACITY: 9500 CUFT/HR OF SHAVINGS/SAWDUST (SPRUCE/PINE/FIR), SIZE MINUS 1/2" & MAX 18% MOISTURE
2. DENSITY: 5 LBS/CUFT
3. DRIVE: 15 HP @ 32 RPM OUTPUT

* FIELD: MAT'L MUST FEED AT BACK OF BIN
 ALL SHAFTS ROTATE IN THE SAME DIRECTION
 SUPPORT STEEL NOT SHOWN

1. The live bottoms' displacement capacity varies with rpm, auger size and number of augers.
2. Variable pitch augers are standard (which keeps the whole bottom live).
3. Weight of Screen will vary based on materials used.
4. Pillow block bearings are standard, with taper adapter mounting.
5. Anti Stall control (PLC) is recommended for difficult materials such as hog, to reverse rotation for a very short interval to clear objects causing blockages.
6. Zero speed switch is available for the final drive shaft to sense a mechanical drive stoppage.
7. A/R flights available (optional).
8. Live bottom can be mounted horizontal or inclined.
9. Models available 9 "dia, 12" dia. and 16" dia. (augers)

MODEL SIZE	STD. NO. OF AUGERS	A	B	C	D	MOTOR(S) HP	WT. (lbs)
216	2	14'-0"	20'-8"	33"	5'-10"	7.5	
316	3	14'-0"	20'-8"	33"	7'-9 13/16"	10	
416	4	14'-0"	20'-8"	33"	9'-9 5/8"	15	