

**BAUM**

PNEUMATICS INC.

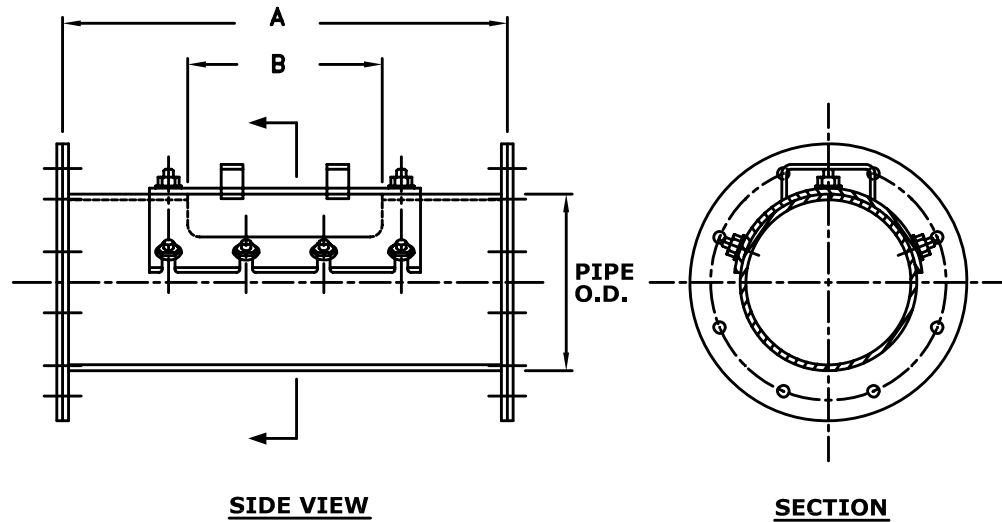
# Specifications

Clean Out Bolted Door Type

A-9200

Rev. 0

04 / 05



CLEANOUTS SUPPLIED COMPLETE WITH COMPANION FLANGES AND GASKETS

PIPE O.D.	A	B	WEIGHT
4 1/2	16	10	18
5 9/16	18	12	32
6 5/8	20	14	45
8 5/8	22	16	68
10 3/4	24	18	92
12 3/4	26	20	122
14	28	20	158
16	30	22	205
18	32	24	242
20	34	26	306