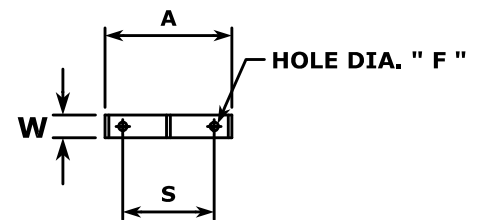


* = THESE DIMENSIONS ARE OPTIONAL
WITHIN LIMITS OF THE SILENCER LENGTH



NOTE: Dimensions in inches, weight in lbs,
varying slightly with production models.
Request certified drawings of particular
models or applications for exact dimensions.

D NOM. SHELL DIA.	S	A	W	F HOLE DIA.	H	J	APPROX. WT. (2) SADDLES
10	5 $\frac{1}{2}$	9 $\frac{1}{2}$	2	$\frac{5}{8}$	3	8 $\frac{3}{8}$	5
12	6 $\frac{1}{2}$	10 $\frac{1}{2}$	2	$\frac{5}{8}$	3	9 $\frac{3}{8}$	5
14	9	13 $\frac{1}{8}$	3	$\frac{3}{4}$	3	10 $\frac{3}{8}$	9
16	9	13 $\frac{1}{8}$	3	$\frac{3}{4}$	3	11 $\frac{3}{8}$	9
18	11	15	3	1"	3	12 $\frac{3}{8}$	10
20	12	15 $\frac{3}{4}$	3	1"	3	13 $\frac{3}{8}$	10
22	12 $\frac{1}{2}$	16 $\frac{5}{8}$	3	1"	3	14 $\frac{1}{2}$	14
24	13	17 $\frac{3}{4}$	3	1"	3	15 $\frac{1}{2}$	15
26	15	19 $\frac{3}{8}$	3	1"	3	16 $\frac{1}{2}$	16
28	16	20 $\frac{3}{8}$	3	1"	3	17 $\frac{1}{2}$	17
30	17	21 $\frac{1}{2}$	3	1"	3	18 $\frac{5}{8}$	23
36	19	25 $\frac{5}{8}$	4	1 $\frac{1}{4}$	3	21 $\frac{5}{8}$	37
42	23	29 $\frac{1}{8}$	4	1 $\frac{1}{4}$	3	24 $\frac{5}{8}$	41
48	26	32 $\frac{5}{8}$	4	1 $\frac{1}{4}$	3	28	69
54	30	36 $\frac{1}{2}$	6	1 $\frac{3}{8}$	3	31	123