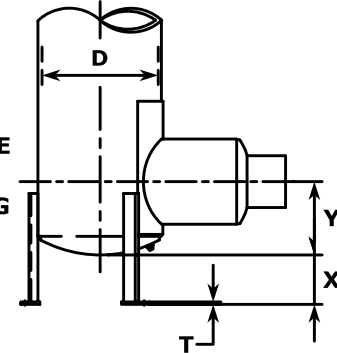


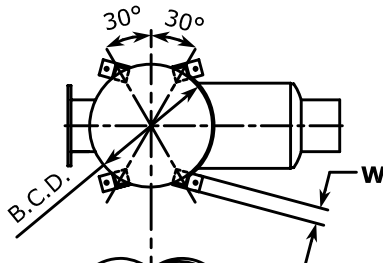
(3) SPECIAL MTG. LEGS WITH .88"Ø HOLES, PADS FACE OUT TO SIMPLIFY FIELD ANCHORING



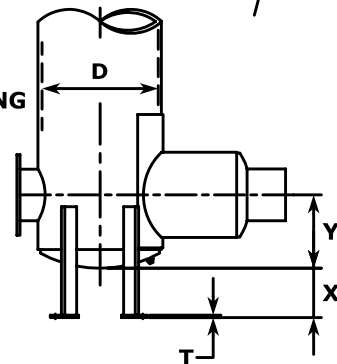
3 - LEG DESIGN

PADS OUT

((1) LOW SIDE CONN.)



(4) SPECIAL MTG. LEGS WITH .88"Ø HOLES, PADS FACING OUT TO SIMPLIFY FIELD ANCHORING



4 - LEG DESIGN

PADS OUT

((OPPOSED CONNECTIONS))

- STANDARD "X" DIMENSION RANGE: 0-6"
- (4) LEGS RECOMMENDED FOR SHELL DIA. 48" AND LARGER AND ON ALL OPPOSED CONNECTION MODELS (RDS, SDS, URDS)

NOTE: Dimensions in inches, weight in lbs, varying slightly with production models. Request certified drawings of particular models or applications for exact dimensions.

D NOM. SHELL DIA.	W-BASE WIDTH (SQ.)	T	F HOLE DIA.	B.C.D.	APPROX. WT.	
					3-LEGS	4-LEGS
10	2 1/2	1/4	7/8	14.19	13	18
12	2 1/2	1/4	7/8	16.19	13	18
14	2 1/2	1/4	7/8	18.19	13	18
16	2 1/2	1/4	7/8	20.19	13	18
18	2 1/2	1/4	7/8	22.19	13	18
20	4	3/8	1"	25.25	35	47
22	4	3/8	1"	27.25	35	47
24	4	3/8	1"	29.25	35	47
26	4	3/8	1"	31.25	35	47
28	4	3/8	1"	33.25	35	47
30	4	3/8	1"	35.25	35	47
36	5	1/2	1 1/4		66	88
42	5	1/2	1 1/4		66	88
48	5	1/2	1 1/4		66	88
54	7	3/4	1 3/8		200	266
60	7	3/4	1 3/8		200	266
66	7	3/4	1 3/8		200	266
72	7	3/4	1 3/8		200	266
78	10	1"	1 3/8		530	706
84	10	1"	1 3/8		530	706
90	10	1"	1 3/8		530	706
96	10	1"	1 3/8		530	706
102	10	1"	1 3/8		530	706
108	10	1"	1 3/8		530	706